



SOUTH BOSTON MARINE MULTIPOINT

Prime Waterfront Terminal

Land

12.5 Acres Available With Deep Water Berth



- 12.5 acre site with direct waterfront access
- Deep water port with 40ft berth depth
- Close proximity to Boston Logan International Airport
- Direct access to designated trucking corridors



Eastern Maritime
Industries

SOUTH BOSTON MARINE MULTIPOINT INTRODUCTION



Plans for renovation and permitting are currently underway. Anticipated date for commencement of terminal operations is during 2024.

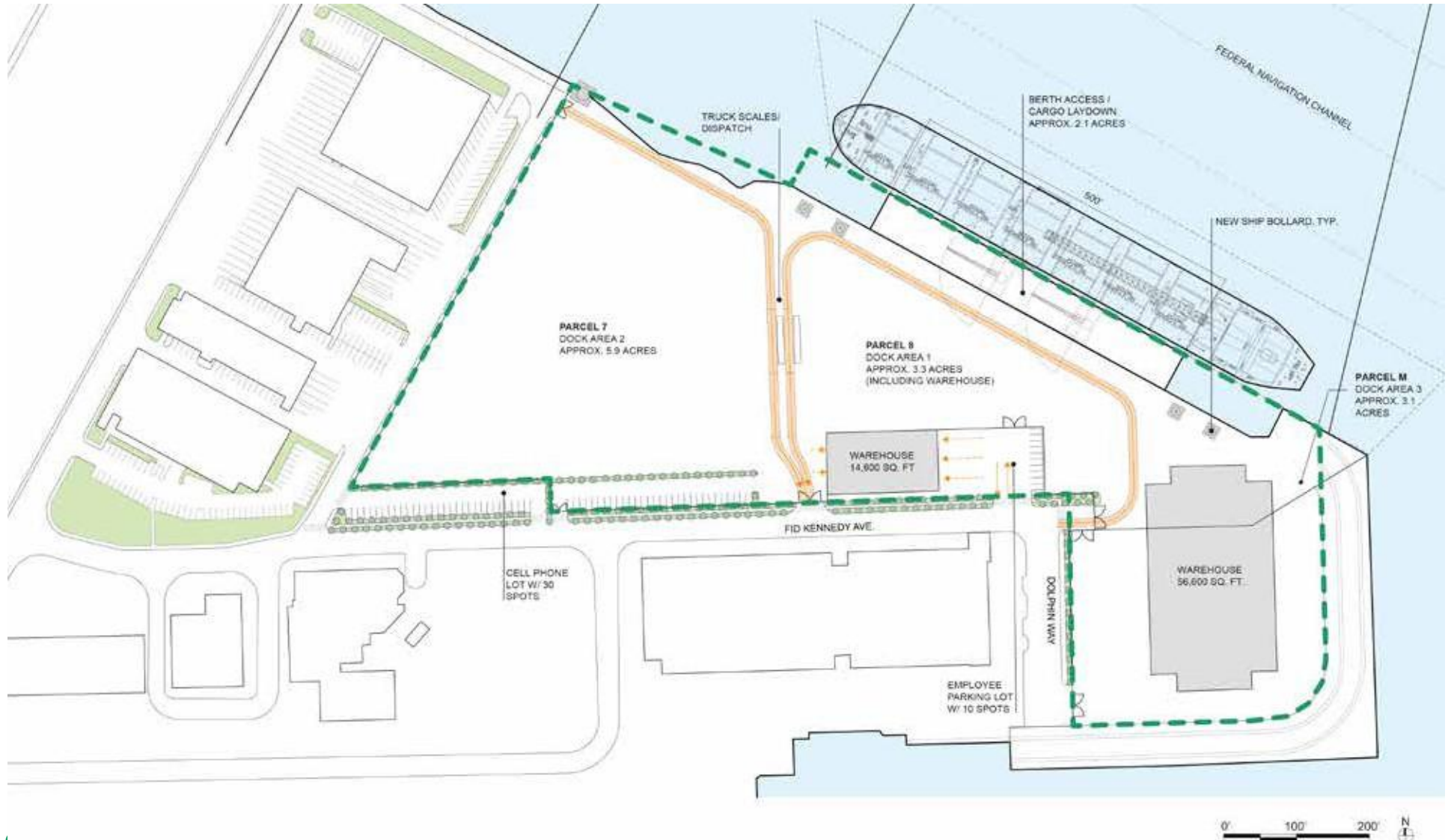
- **2016 - 2018** RFP's issued by MassPort and Boston Planning and Development Agency (BPDA)
- **2020** - Eastern Marine Industries awarded RFP's
- **2021**- Eastern Marine Industries achieves tentative designation with both MassPort and BPDA
- **2021-2023** - Design, engineering, permitting of SBMMP
- **2023-2024** - Anticipated Construction of SBMMP
- **2024** - Anticipated SBMMP ready to host operations





Eastern Maritime
Industries

SOUTH BOSTON MARINE MULTIPOINT SITE PLAN



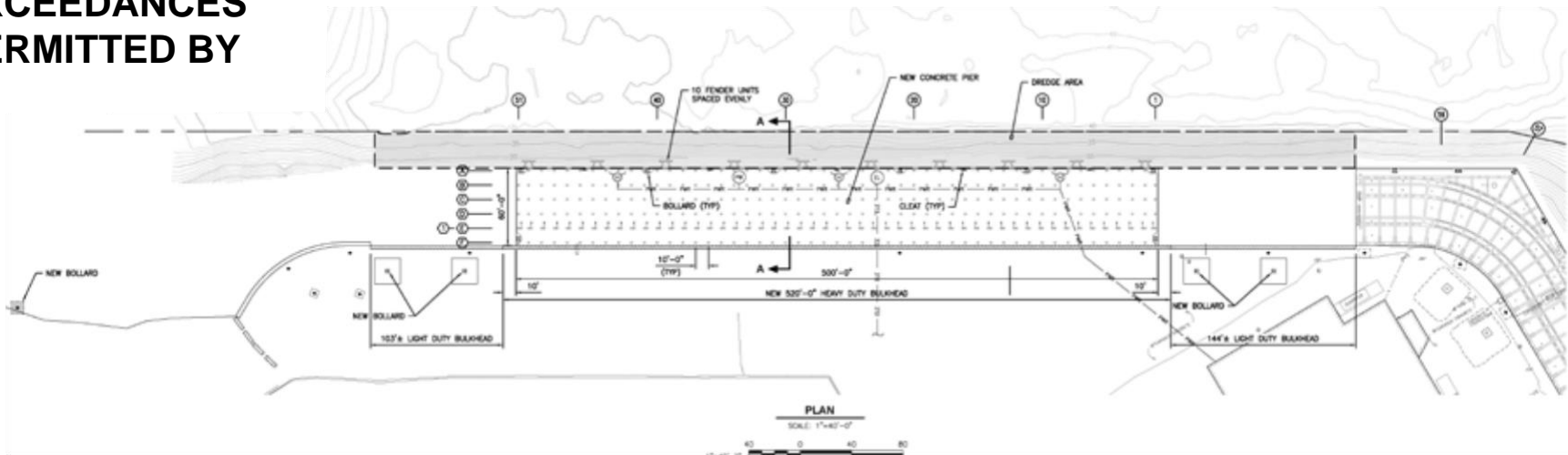
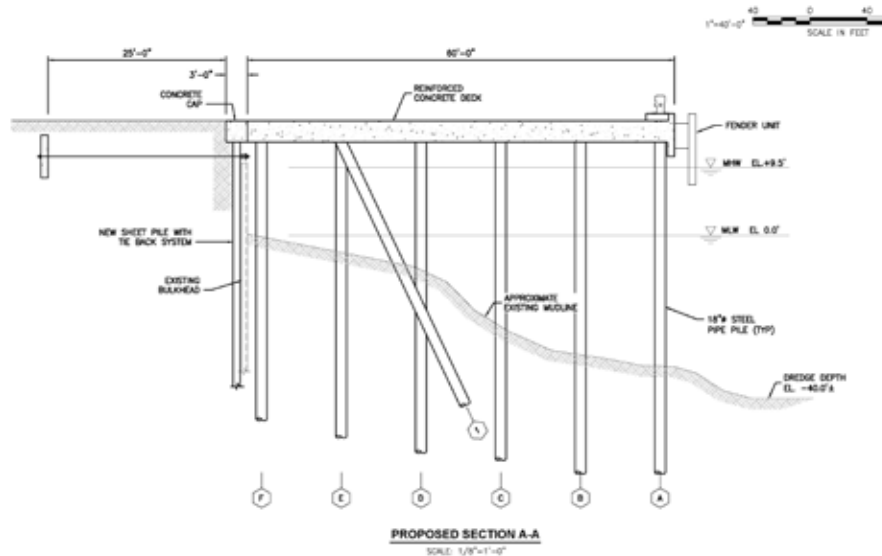


Eastern Maritime
Industries

SOUTH BOSTON MARINE MULTIPOINT BERTH & PIER



- 500 FT LONG PIER
- 770 FT LONG DREDGED BERTH AREA W/ 40 FT DRAFT
- 125FT HEIGHT ALLOWANCE & TEMPORARY HEIGHT EXCEEDANCES PERMITTED BY



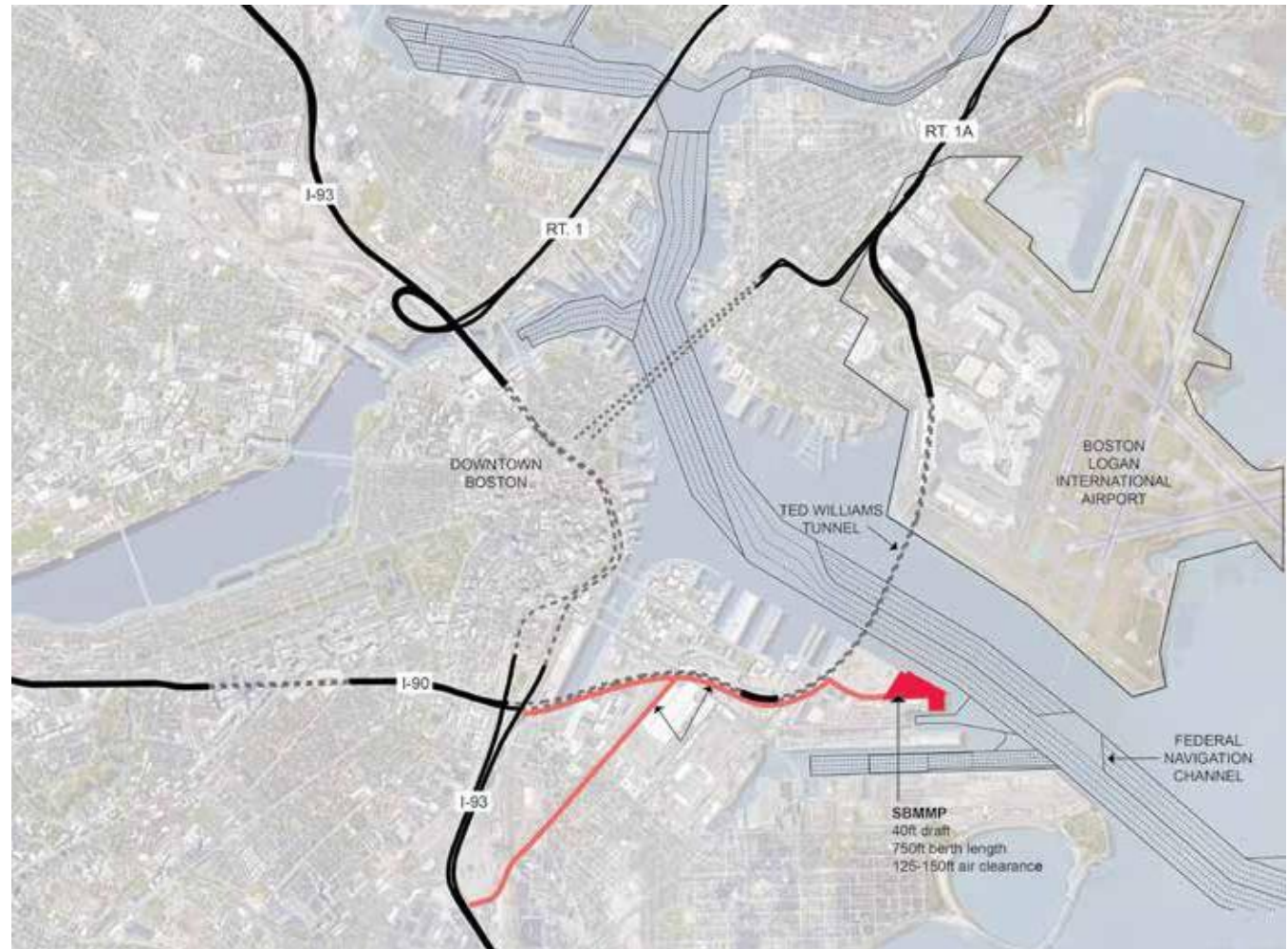


Eastern Maritime
Industries

SOUTH BOSTON MARINE MULTIPOINT REGIONAL CONTEXT



- NEAR I-90 AND I-93
- ADJACENT TO TWO DEDICATED TRUCKING ROUTES FOR ACCESS TO HIGHWAYS
- DIRECT OCEAN ACCESS, NO BRIDGES OR TUNNELS TO NAVIGATE





Eastern Maritime
Industries

SOUTH BOSTON MARINE MULTIPOINT AVAILABLE WAREHOUSE SPACE



WAREHOUSE #1

- NEW CONSTRUCTION
- 14,000 SQ FT OPEN SPACE W/ 25 FT CEILING HEIGHT



WAREHOUSE #2

- 65,000 SQ FT OPEN SPACE W/ 20-35 FT CEILING HEIGHT
- 20,000 SQ FT 2ND FLOOR MEZZANINE SPACE



Contact: Sean McNamee

Phone: (978) 458-6420

Email: smcnamee@easternsalt.com

www.easternsalt.com